



ILLINOIS AUTO TRUCK
COMPANY, INC.

SOFT PEDAL[®] Clutch

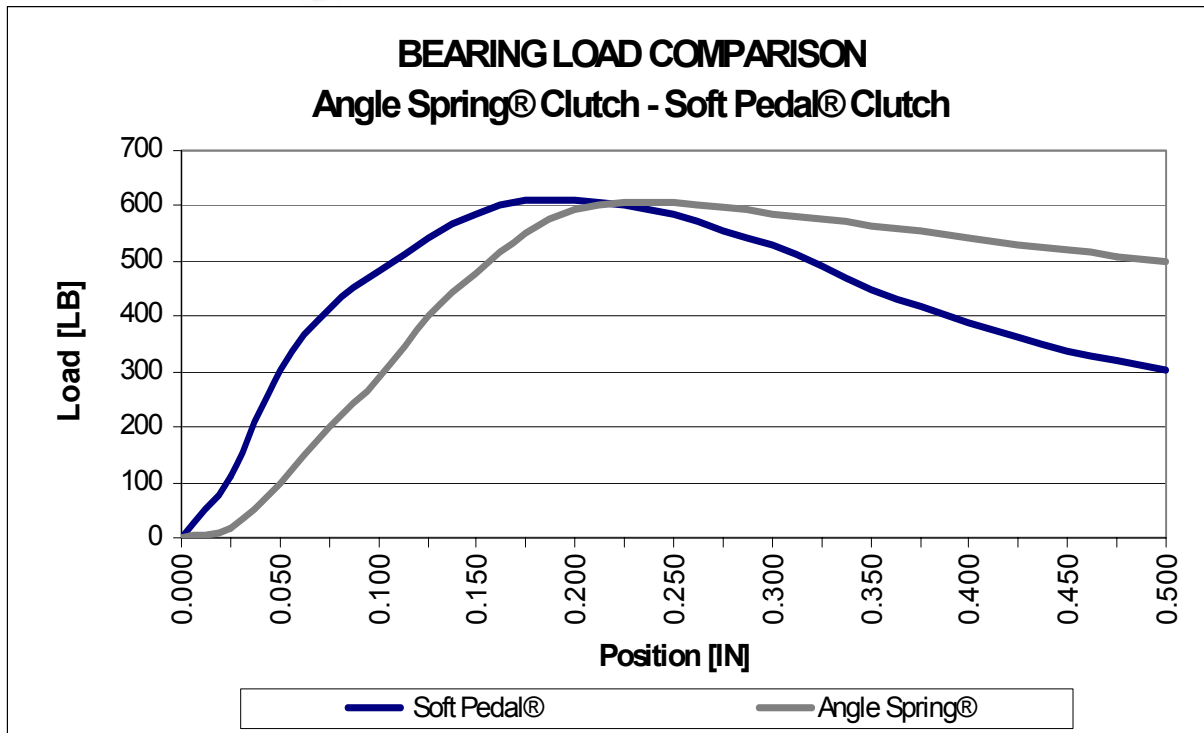


**Illinois Auto Truck
Company, Inc.
introduces the**

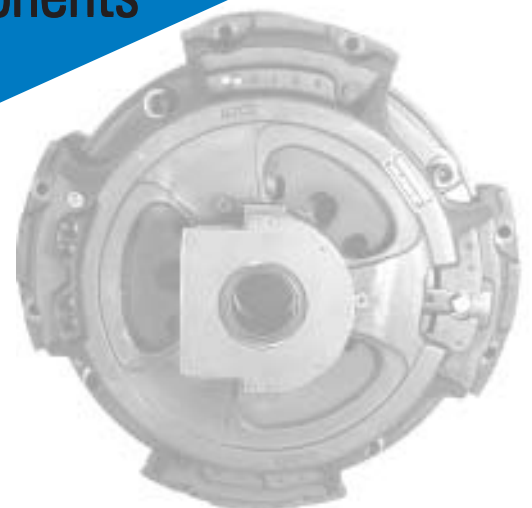
SOFT PEDAL®

IATCO Clutch.

Available in 14" and 15 1/2" models.



- State-of-the-art diaphragm spring design
- Lower bearing load - lower pedal effort
- 30% less bearing load with no plate pressure reduction
- Smoother engagement
- Strap drive for smoother transfer of energy
- No metal wear to cause internal friction
- Increased cover ventilation for better heat dissipation
- Traditional manual adjustment
- Coverage for most 14" and 15 ½" models
- Current coverage up to 1850 foot pounds
- Coverage for 2050 foot pounds coming soon
- Less driver fatigue and improved productivity
- OEM Quality - Made in the USA
- 100% New (Not Reman) Components
- Competitively Priced

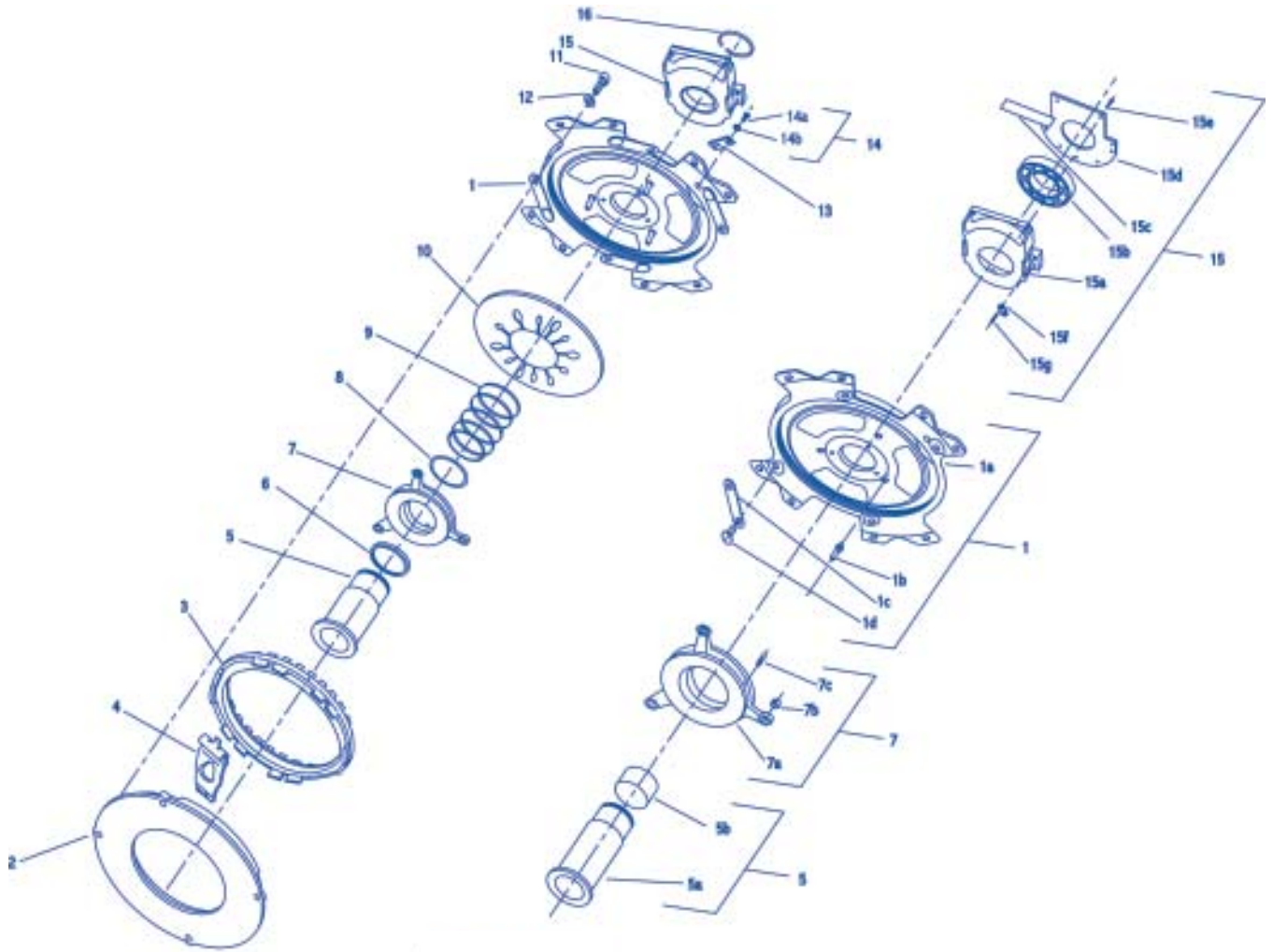


Qty. per
assembly

14" SOFT PEDAL® Clutch Components

	IATCO Part No.	Description	Qty. per assembly	
			NCA-160051-1	NCA-160051-1-M
1	M-1713	Assy., Flyw heel Ring (Cover)	1	1
1a	M-1712	Ring, Flyw heel (Cover)	1	1
1b	M-1527	Pin, Spring Retainer	3	3
1c	M-1528	Strap, Drive	4	4
1d	M-1534	Rivet, Solid	5	5
2	M-1714	Plate, Pressure	1	1
3	M-1525	Ring, Adjusting	1	1
4	M-1531	Lever, Clutch	6	6
5	M-1361	Assy., Sleeve	1	1
5a	M-1361-A	Sleeve	1	1
5b	M-0260	Bushing, Sleeve	2	2
6	M-1362	Seat, Sleeve	1	1
7	M-1526	Assy., Spring Retainer	1	1
7a	M-1526-A	Retainer, Spring	1	1
7b	M-1536	Bushing, Self-lubricated	3	3
7c	M-1535	Pin, Spring	3	3
8	M-1363	Washer, Sleeve	1	1
9	M-1364	Spring, Sleeve	1	1
10	M-1529	Spring, Diaphragm (3600 #)	1	1
11	M-1532	Bolt, Shocket Head	4	4
12	M-1533	Washer, Flat, Hardened	4	4
13	M-0696	Lock, Adjusting Ring	1	1
14	X-019	Kit, Bolt & Lock Washer	1	1
14a	X-019-A	Bolt, Hex Head	1	1
14b	FW-114	Washer, Lock	1	1
15	M-1367	Assy., Bearing Cage	1	
	M-1715	Assy., Bearing Cage		1
15a	M-1365	Cage, Bearing	1	
	M-1422	Cage, Bearing		1
15b	212-S	Bearing, Release	1	1
15c	M-0213	Spring, Bearing Cage	2	2
15d	M-0211	Cover, Bearing Cage	1	1
15e	X-012-L	Rivet, Solid	4	4
15f	M-1366	Pad, Bearing Cage	2	2
15g	X-066	Rivet, Solid	4	4
16	M-0256	Ring, Retaining	1	1





© Copyright 2001 - Illinois Auto Truck Company, Inc.

Part Number	Replaces Manufacturer's Part Number	Cover Assembly Number	Adjustment Type	Bearing Type	Plate Load, Pounds	Torque Rating (ft/lbs)	Carrier Style	Friction Material	Ceramic Configuration	Number of Springs	Conventional	Free Travel	Intermediate Plate	Rear Disc
														Front Disc
NMU051-020-1	108034-32	NCA-160051-1	Manual	Greasable	3200	1000	Round	Organic		8	X		S-1412	M-0554
														M-0555
NMU051-184-1	108050-59	NCA-160051-1	Manual	Greasable	3200	1400	4-Paddle	Ceramic	VSR	8		X	S-1413	M-1625
														M-1626
NMU051-184-1-M MACK	108950-59	NCA-160051-1-M	Manual	Greasable	3200	1400	4-Paddle	Ceramic	VSR	8		X	S-1413	M-1625
														M-1626

Qty. per assembly

IATCO Part No.	Description	Qty. per assembly								
		NCA-151455-4	NCA-151455-4-M	NCA-151455-6	NCA-151455-6-M	NCA-152705-4	NCA-152705-4-M	NCA-152705-6	NCA-152705-6-M	
1	M-1524	Assy., Flyw heel Ring (Cover)	1	1	1	1	1	1	1	1
1a	M-1523	Ring, Flyw heel (Cover)	1	1	1	1	1	1	1	1
1b	M-1527	Pin, Spring Retainer	3	3	3	3	3	3	3	3
1c	M-1528	Strap, Drive	4	4	4	4	4	4	4	4
1d	M-1534	Rivet, Solid	5	5	5	5	5	5	5	5
2	M-1530	Plate, Pressure					1	1	1	1
	M-1700	Plate, Pressure	1	1	1	1				
3	M-1525	Ring, Adjusting	1	1	1	1	1	1	1	1
4	M-1531	Lever, Clutch	6	6	6	6	6	6	6	6
5	M-1361	Assy., Sleeve	1	1	1	1	1	1	1	1
5a	M-1361-A	Sleeve	1	1	1	1	1	1	1	1
5b	M-0260	Bushing, Sleeve	2	2	2	2	2	2	2	2
6	M-1362	Seat, Sleeve	1	1	1	1	1	1	1	1
7	M-1526	Assy., Spring Retainer	1	1	1	1	1	1	1	1
7a	M-1526-A	Retainer, Spring	1	1	1	1	1	1	1	1
7b	M-1536	Bushing, Self-lubricated	3	3	3	3	3	3	3	3
7c	M-1535	Pin, Spring	3	3	3	3	3	3	3	3
8	M-1363	Washer, Sleeve	1	1	1	1	1	1	1	1
9	M-1364	Spring, Sleeve	1	1	1	1	1	1	1	1
10	M-1529	Spring, Diaphragm (3600 #)	1	1			1	1		
	M-1711	Spring, Diaphragm (4000 #)			1	1			1	1
11	M-1532	Bolt, Shocket Head	4	4	4	4	4	4	4	4
12	M-1533	Washer, Flat, Hardened	4	4	4	4	4	4	4	4
13	M-0696	Lock, Adjusting Ring	1	1	1	1	1	1	1	1
14	X-019	Kit, Bolt & Lock Washer	1	1	1	1	1	1	1	1
14a	X-019-A	Bolt, Hex Head	1	1	1	1	1	1	1	1
14b	FW-114	Washer, Lock	1	1	1	1	1	1	1	1
15	M-1367	Assy., Bearing Cage	1		1		1		1	
	M-1715	Assy., Bearing Cage		1		1		1		1
	M-1365	Cage, Bearing	1		1		1		1	
15a	M-1422	Cage, Bearing		1		1		1		1
15b	212-S	Bearing, Release	1	1	1	1	1	1	1	1
15c	M-0213	Spring, Bearing Cage	2	2	2	2	2	2	2	2
15d	M-0211	Cover, Bearing Cage	1	1	1	1	1	1	1	1
15e	X-012-L	Rivet, Solid	4	4	4	4	4	4	4	4
15f	M-1366	Pad, Bearing Cage	2	2	2	2	2	2	2	2
15g	X-066	Rivet, Solid	4	4	4	4	4	4	4	4
16	M-0256	Ring, Retaining	1	1	1	1	1	1	1	1

SOFT PEDAL®
15 1/2"

Clutch Components



IAT ILLINOIS AUTO TRUCK COMPANY, INC.

1669 Marshall Drive Des Plaines, Illinois 60018-1840 USA

Telephone: 847-299-1100

Toll-Free: 800-842-1712

Facsimile: 847-299-1205

Toll-Free Fax: 800-942-7660

Website: www.iatcoinc.com

Email: sales@iatcoinc.com



SOFT PEDAL[®]

® Registered Trademark of Illinois Auto Truck Company, Inc.

© Copyright 2001 - Illinois Auto Truck Company, Inc.